

RS-06

Overhead Door Contacts

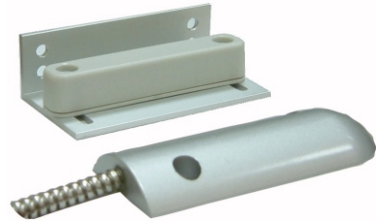
Nd-Fe-B N35 Magnet

Much Better than Alnico Magnet



Features:

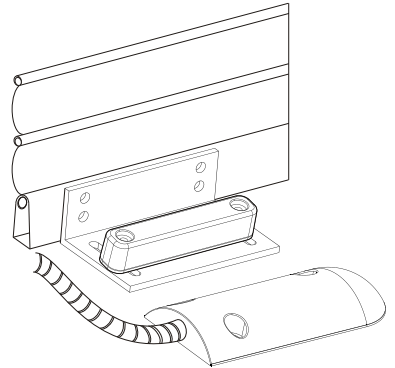
- ⊙ 2" (50 mm) Operating Gap
- ⊙ Nd-Fe-B N35 magnet, high performance than Alnico magnetic !
- ⊙ Aluminum-Shape bracket-adjustable
- ⊙ Material:
 - a. Magnetic contacts pack: Zinc casting
 - b. Magnet casing: ABS
 - c. L-shape bracket: Aluminum alloy
- ⊙ Armored cable wire length: 24" (61 cm)
- ⊙ UL standard grade AWG#22 wiring
- ⊙ Highly & reliable quality magnet & reed switch
- ⊙ Color: Gray



Specification:

Operating Gap	2" (50 mm)
Switching Current	0.5 A Max.
Switching Volt.	100 VDC
Contact type	N.C.
Min. Breakdown Volt.	220 VDC (AT<25) 250 VDC (AT>25)
Max. Contact rating	10W
Magnet	Nd-Fe-B N35
Armored Cable Length	24" (61 cm)
Operating Temp.	-25°C ~ 45°C

Installation :



Size :

